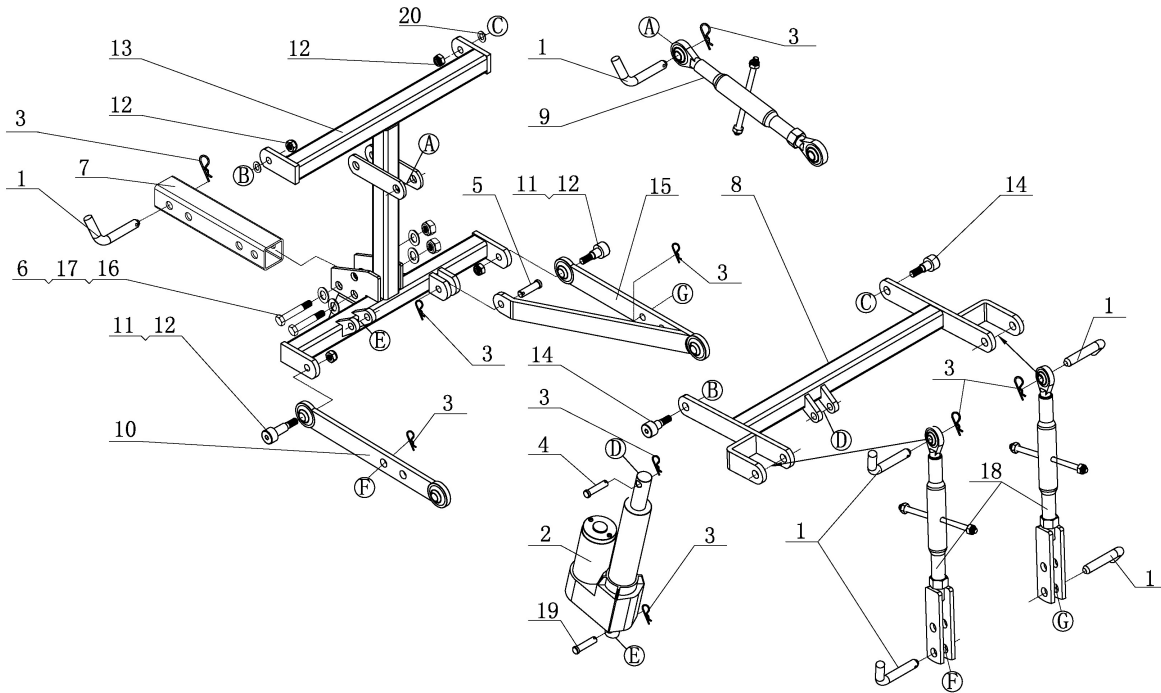




WHSO3HD
“DirtWorks 3-Point Hitch System”
Installation Manual





Part	Description	Qty
1	Ø5/8" x 3.00" Bent Hitch Pin	6
2	Actuator	1
3	R-Pin	9
4	Ø12.5mm x 67.25mm Actuator Pin (.50" x 2.63")	2
5	Ø12.5mm x 47.25mm Pin (.50" x 1.75")	1
6	M16 Lock Nut	2
7(A)	2" ATV Receiver	1
7(B)	2" UTV Receiver	1
8	Upper Lift Arm (welded)	1
9	Top Link (7.5")	1
10	Draft Arm with Ball Swivels (LH)	1
11	Ø5/8" x 1.25" Shoulder Bolt	1
12	M12 Lock Nut	4
13	Main Tree Weldment	1
14	Ø5/8" X .625" Shoulder Bolt	3
15	Draft Arm with Stabilizer (RH)	1
16	M16 X 90 Hex Bolt	2
17	Flat Washer Ø16	4
18	Adjustable Screw Assembly 2	2
19	Flat Washer Ø12	2

Important!

Please read through the entire instruction manual once before proceeding.

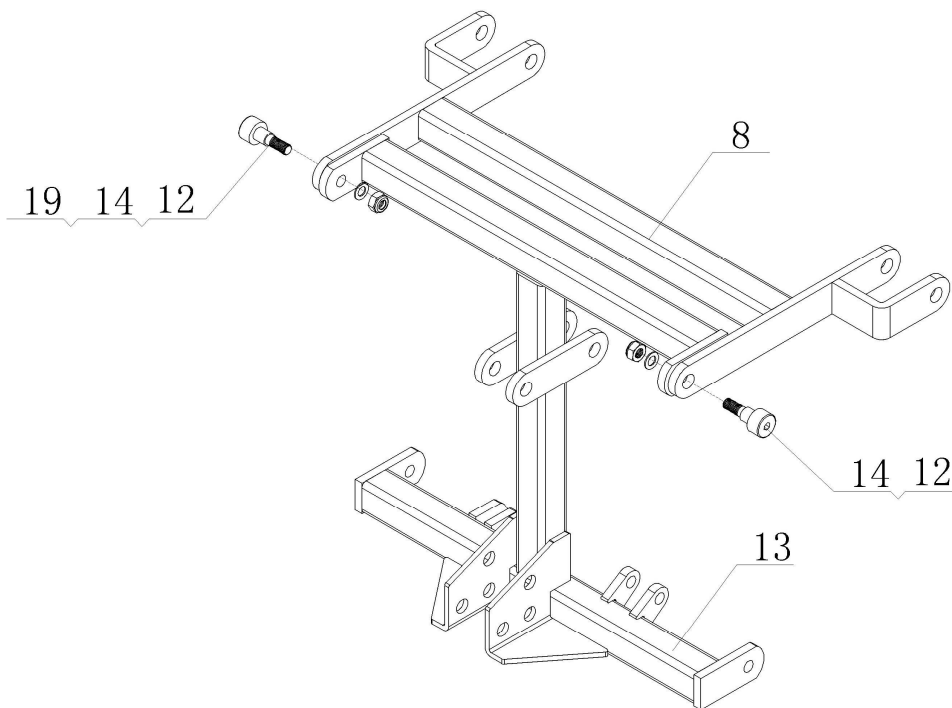
Tools Required: Adjustable Wrench Set.

Before you start:

Make sure the area you are working is clean and clear of any dirt or debris that might hinder the assembly of your DirtWorks 3-point hitch system.

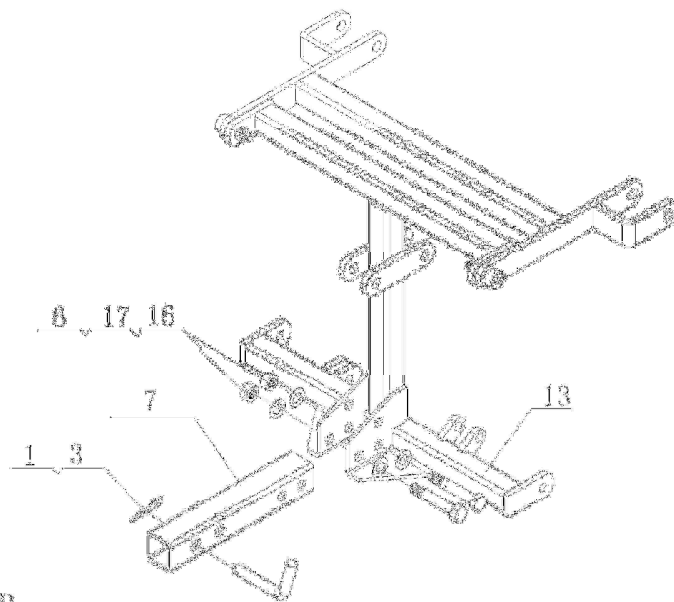
Assembly Steps:3-Point Hitch

We recommend that you lubricate all threaded bolts, nuts and turnbuckle threaded rods before assembly to prevent rust and corrosion.



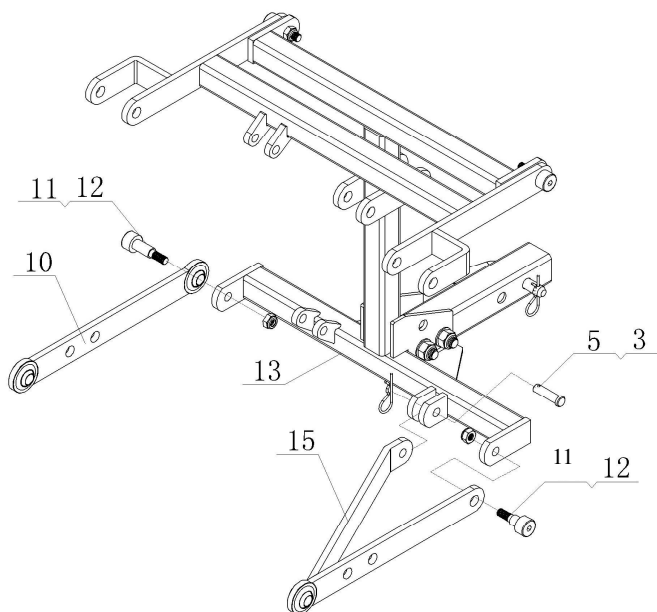
STEP 1

1. Locate (#8) Upper Lift Arm and (#13) Main Tree Weldment.
2. Locate (#14) 5/8" x .625" Shoulder Bolt, (#12) M12 Lock Nut, (#19) Flat Washer Ø12
3. Space (#19) Flat Washer Ø12 between (#14) 5/8" x 1/2" Shoulder Bolt and (#12) M12 Lock Nut. Insert (#14) 5/8" x .625" Shoulder Bolt secure (#8) Upper Lift Arm to (#13) Main Tree Weldment with (#12) M12 Lock Nut. Repeat for other side



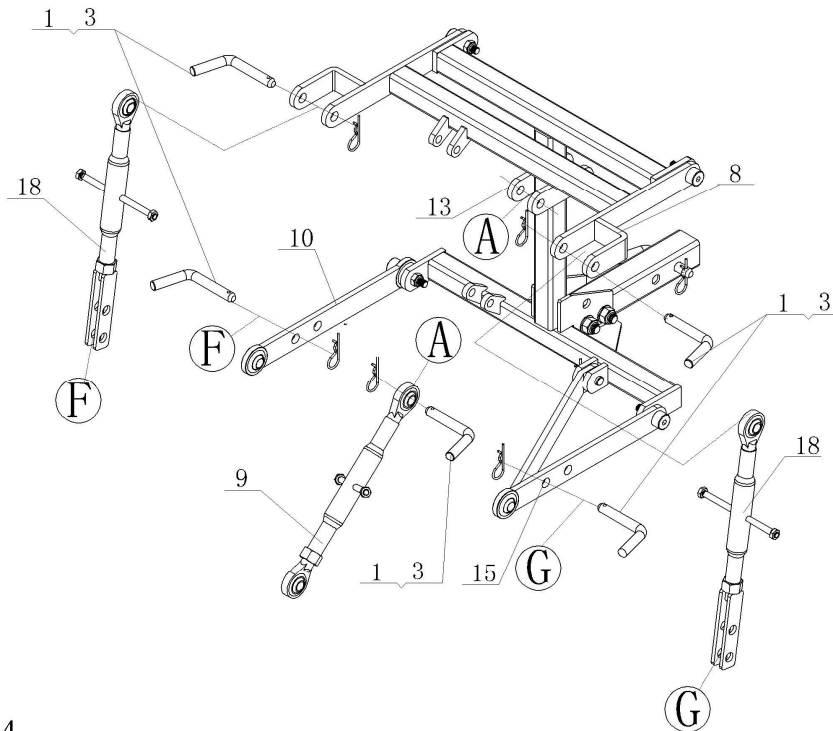
STEP 2

1. Locate (#7) 2" ATV/UTV Receiver and (#13) Main Tree Weldment. NOTE: For ATV please use the 13" Hitch Tube, and for UTV please use the 18" Hitch Tube provided.
 2. Locate (#1) 5/8" x 3.00" Bent Hitch Pin, (#3) R-Pin, (#6) Lock Nut M16, (#17) Flat Washer Ø16, (#16) M16X90 Hex Bolt.
- At this time determine the size of the hitch assembly you would like to install.
3. Insert the 2" Receiver into the bracket on the (#13) Main Tree Weldment. Secure using the (#16) M16 x 90 Hex Nut, (#17) Flat Washer Ø16 and (#6) M16 Lock Nut.
 4. Secure (#1) 5/8" x 3.00" Bent Hitch Pin to (#7A/B) 2" Receiver with (#3) R-Pin.



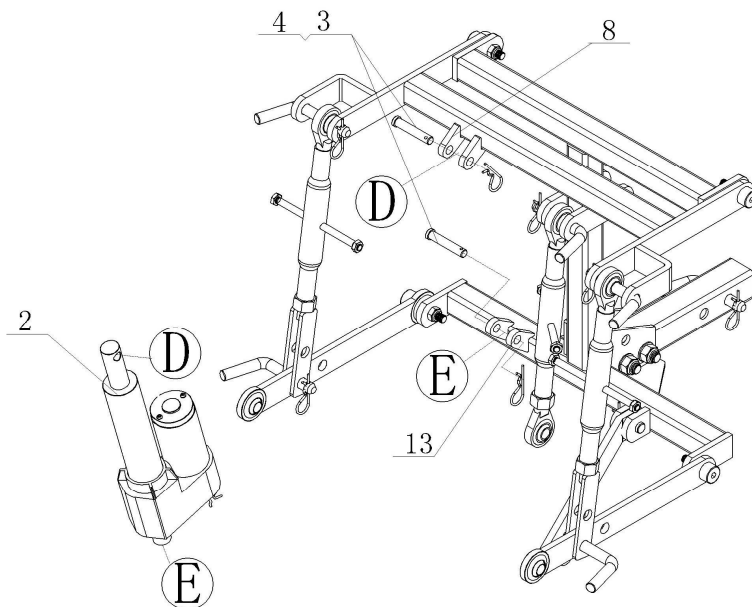
STEP 3

1. Locate (#10) Draft Arm with Ball Swivels, (#13) Main Tree Weldment, (#15) Draft Arm With Stabilizer.
2. Locate (#11) 5/8" x 1.25" Shoulder Bolt, (#12) M12 Lock Nut, (#3) R-Pin, (#5) Pin B, (#11) 5/8" x 1.25" Shoulder Bolt.
3. Secure (#10) Draft Arm with Ball Swivels to the left bottom of (#13) Main Tree Weldment with (#11) 5/8" x 1.25" Shoulder Bolt and (#12) M12 Lock Nut. Then secure (#15) Draft Arm with Stabilizer to the bottom right side of (#13) Main Tree Weldment with (#3) R Pin, (#5) Ø12.5mm x 47.25mm Pin, (#11) 5/8" x 1.25" Shoulder Bolt, (#12) M12 Lock Nut.



STEP 4

1. Locate (#9) Top Link, (#13) Main Tree Weldment, (#18) Top Link with Clevis Ends, (#8) Upper Lift Arm.
2. Locate (#1) 5/8" x 3.00" Bent Hitch Pin, (#3) R-Pin.
3. Match **A** to **A**, secure (#9) Top Link to (#13) Main Tree Weldment with (#1) 5/8" x 3.00" Bent Hitch Pin and (#3) R-Pin. Then match **F** to **F**, **G** to **G**, secure the couple of (#18) Top Link with Clevis Ends to the both sides of (#8) Upper Lift Arm with (#1) 5/8" x 3.00" Bent Hitch Pin and (#3) R-Pin.



STEP 5

1. Locate (#2) Actuator, (#4) Actuator Pin, (#3) R-Pin
2. Match **D** to **D**, **E** to **E**, secure (#2) Actuator to (#8) Upper Lift Arm and (#13) Main Tree Weldment with (#4) Ø12.5mm x 67.25mm Actuator Pin and (#3) R-Pin.

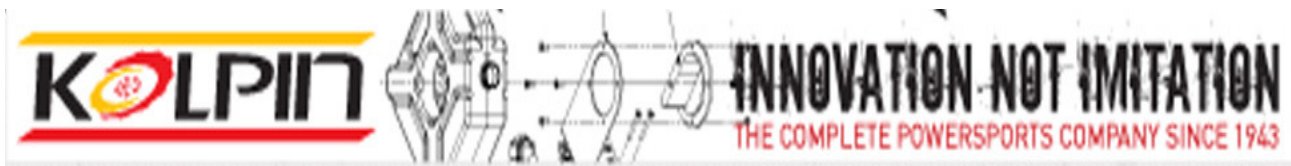
*****Caution*****

Please Read and Follow all instructions before installation and operation of the “DirtWorks -ATV 3 Point Hitch”

- Always read your ATV's Owner's Manual's instructions regarding the use of aftermarket accessories and the safe operation of your ATV.
- Always follow your ATV manufacturer's maximum recommended towing capacities.
- Operating an ATV with accessories or additional implements secured to the ATV may affect the handling of the ATV, including breaking, steering, stopping and turning.
- Excessive speeds can result in a loss of control and can cause serious personal injuries or death. Do not exceed 5 MPH when the “DirtWorks 3-Point Hitch” or any accessories are secured to the ATV.
- Always monitor your ATV's engine while using the “DirtWorks 3-Point Hitch” and its implements to prevent overheating of engine and its components. Take periodic breaks to allow for the engine to cool.
- Never carry passengers on your ATV unless your ATV is designed to carry more than one person.
- Never use the “DirtWorks 3-Point Hitch” or any of its implements to carry a person.
- Keep hands and feet away from all “DirtWorks 3-Point Hitch” parts and implements while operating the ATV.
- Never place yourself or any part of your body under, between or on any part of “DirtWorks 3-Point Hitch” or its implements while operating the ATV or using the implements.
- Always use caution when removing and replacing either the “DirtWorks 3-Point Hitch” or its implements; they are heavy and assistance may be required.
- Always maintain proper balance and weight distribution of your ATV; you may need to add weight to the opposite end of the ATV to counter weight loaded via the “DirtWorks 3-Point Hitch”.
- Never traverse steep grades while using “DirtWorks 3-Point Hitch” and its implements; the ATV could overturn causing serious personal injury or death to the operator and bystanders.
- **CAUTION: BE AWARE OF “PINCH POINTS” TO PREVENT BODY INJURY.**

MAINTENANCE

At the beginning and end of every season apply light machine oil to all bolts, pins and especially to all the swivel balls at the ends of the turnbuckles and frame extension. Failure to lubricate the swivel balls can cause them to seize and not move.



CORPORATE HEADQUARTERS

P.O. Box 107, 205 N. Depot Street

Fox Lake, Wisconsin 53933-0107

Telephone: (920) 928-3118

Toll Free: (877) 956-5746

Fax: (920) 928-3687

Customer Service: 1-877-956-5746

Email: customerservice@kolpin.com

For warranty information log into: <http://www.kolpinpowersports.com/warranty.html>

To purchase additional high quality KOLPIN products to enhance your ATV / UTV experience and utilization you can purchase on line or if you need a product today find your nearest dealer at:

<http://www.kolpinpowersports.com>